

Fabric for black-out blinds

Colour Chart

Fabric for black-out blinds

WAREMA fabrics for black-out blinds are available in up to 3 fabric qualities made from Trevira CS, Soltis B92 or glass fibre curtain, depending on the technical version of the black-out systems. Depending on the type, fabrics are used with or without incorporated stiffener profiles. Models with stiffeners are equipped with aluminium profiles in welded slots, ensuring that movement on the guide rails is secure even for wide units. VDA easyZIP is equipped with a special easyZIP guidance and does not require stiffener profiles.

WAREMA black-out fabrics are completely light-proof and can be easily rolled.

All materials are resistant to UV rays, and they are corrosion-proof and rot-proof.

Textile fabric

Base material is made from Trevira CS, and is flame retardant according to DIN 4102-1 B1.

Available designs:

Design no.	Fabric colour	
	inside	outside
1000	White	Silver
1001	Grey	Silver
1004	Black	Silver
1005	White	White

Glass fibre curtain

Fabric laminated with PTFE (polytetrafluorethylene), classified as non-flammable according to DIN 4102-1 -A2.

Available designs:

Design no.	Fabric colour	
	inside	outside
1200	Grey	Silver

For glass fibre curtains, please see the separate price table in the price list.

Type / fabric / stiffener rods allocation

	VDA type		
	VDA 13	VDA easyZIP	H-VDA
Textile fabric	●	–	●
Soltis B92	●	○	–
Glass fibre curtain	●	–	●

Legend:

- with stiffener rods
- without stiffener rods
- Fabric not possible

Soltis B92

Sturdy polyester fabric with PVC coating on both the inside and the outside, flame retardant in accordance with standard DIN 4102-1 B1.

Available designs:

Design no.	Fabric colour	
	inside	outside
B92-1043	Brown	Silver
B92-1044	White	Silver
B92-1045	Silver-black	Silver
B92-1046	Silver	Silver
B92-2135	Sand beige	Silver
B92-2171	Pebble stone	Silver
B92-51176	Jet black	Silver



The SunLight Manager

Fabric for black-out blinds

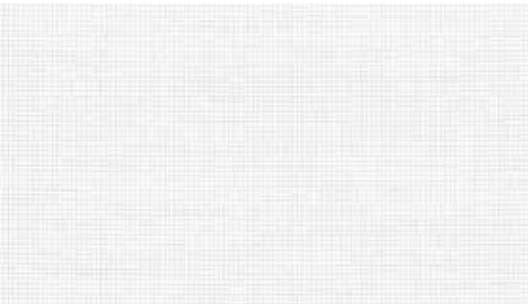
Slight colour deviations may occur.



1000



1001



1005

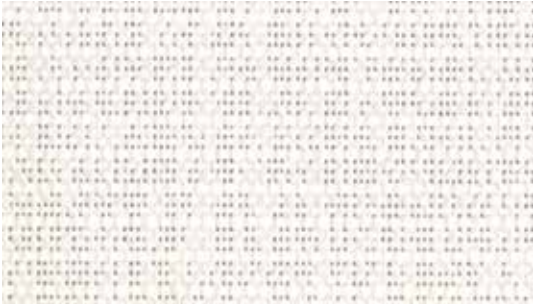


1004

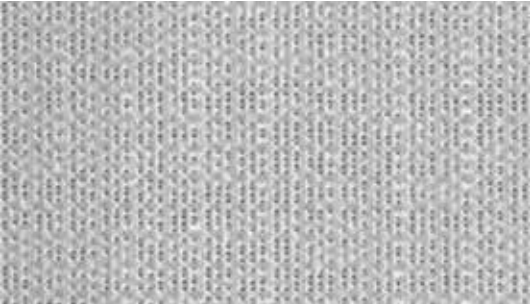


1200 1)

1) Please note separate price table in the purchase price list



B92-1044



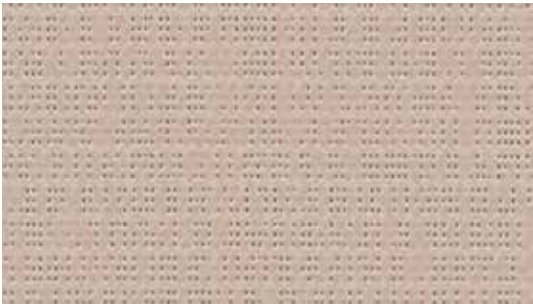
B92-1046



B92-1043



B92-1045



B92-2135



B92-2171



B92-51176